

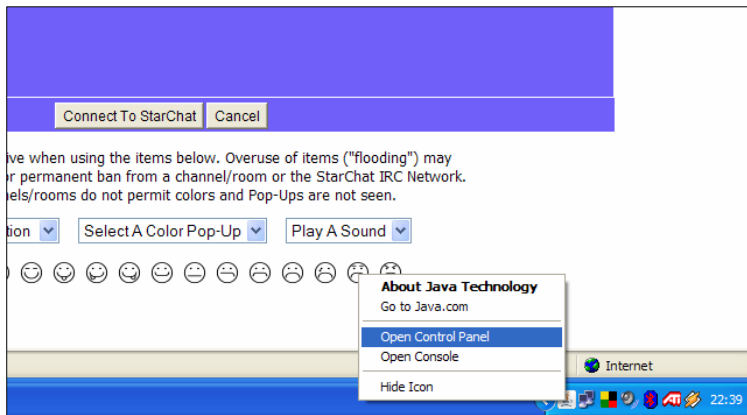
## Entering RGW JavaChat using Java Version 6

Due to the recent automatic updates performed by the Java environment there has been some problems accessing the RGW chat room. This help document gives instructions how to overcome the issues caused by these updates.

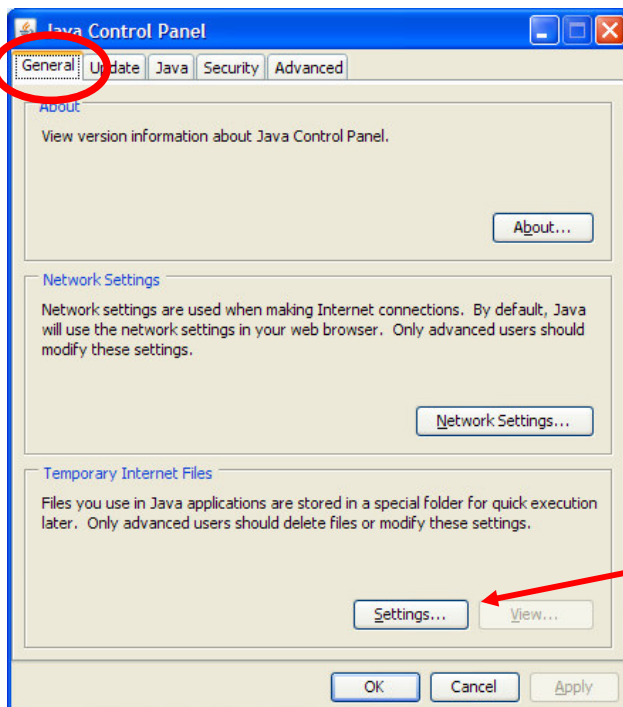


If when running the RGW Java Chat you get this icon in the system tray (near clock, bottom right of screen) you are running Java Version 6.

If the chat room fails to connect follow the steps laid out below.



Right click the JAVA icon and select 'Open Control Panel' from the menu pop up.

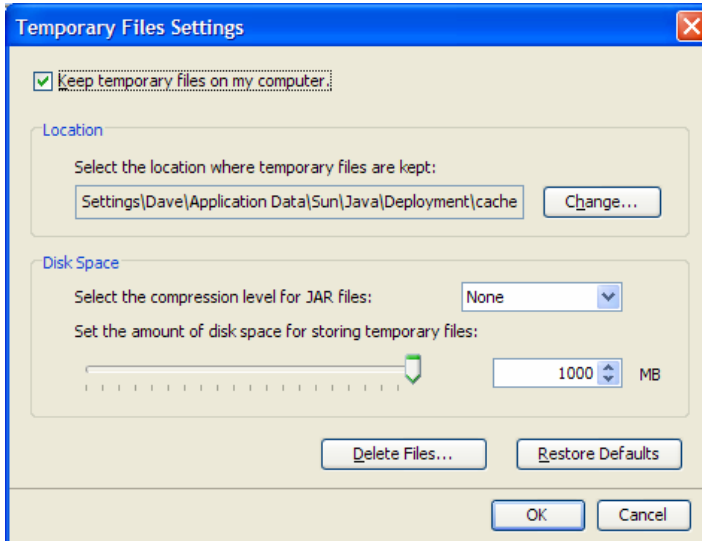


Select the 'General' tab.

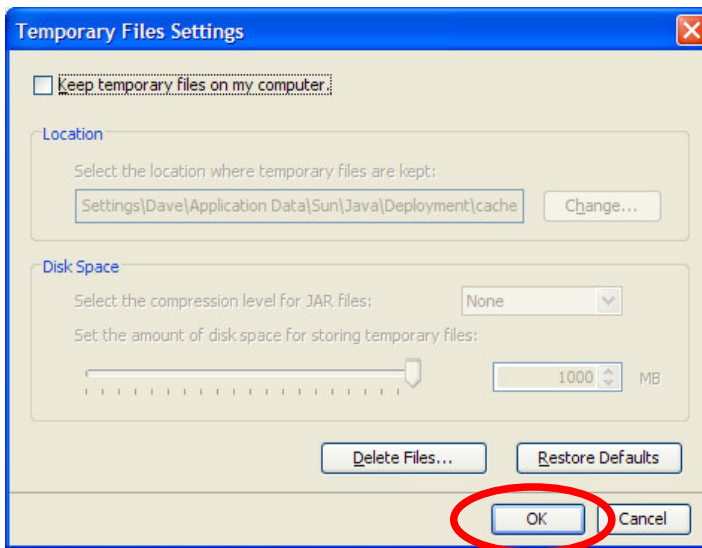
Click on the 'Settings' tab in the 'Temporary Internet Files'



## Entering RGW JavaChat using Java Version 6



On this page remove the check mark from the option 'Keep temporary file on my computer'



All the options should grey out as shown here.

Click 'OK'

Close ALL internet explorer windows and try the RGW window again.

### NOTE:

Due to new files being loaded for the first time the opening of the chatroom login window could take as long as 20 seconds. **PLEASE BE PATIENT!**

